

- 1
- 2
- 3
- 4
- 5
- 6
- 7
- 8
- 9
- 10
- 11
- 12
- 13
- 14
- 15
- 16
- 17
- 18
- 19

MAIN SPECIFICATIONS

Tube
Stainless Steel AISI 304 **NI**
Ground, matte finish (Ra < 0.8 µm) **MT**

End supports
Stainless Steel AISI 304
Matte finish (Ra < 0.8 µm)

Sealing ring and wiper
TPU **T**
- Blue
- Temperature resistant -20 °C to +110 °C
- Hardness 95±5 Shore A
- FDA compliant

Locking wedge
Brass

Grub screw
Stainless steel

FEATURES AND APPLICATIONS

Tubular handles GN 3330 comply with the DGVU testing principles and are designed for use in hygienic areas. The sealed mounting surface enables fastening without dead spaces. The high quality finish as well as the non-concave geometry prevent adherence of dirt and facilitate cleaning.

The handle legs are loosely enclosed for fastening to the handle tube using the integrated clamping wedge during installation. The position of the handle legs can be adjusted as required, but must not be less than the minimum distance a, as the tubes may be undersized in the edge area.

For large lengths or loads, additional handle legs can be added. These are available under standard part number GN 3331 (see page -).

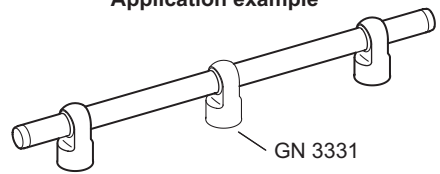
ACCESSORIES

- Screws NT-HD-SST (see page -)
- Screws NTR-HD-SST (see page -)
- Handle legs GN 3331 (see page -)

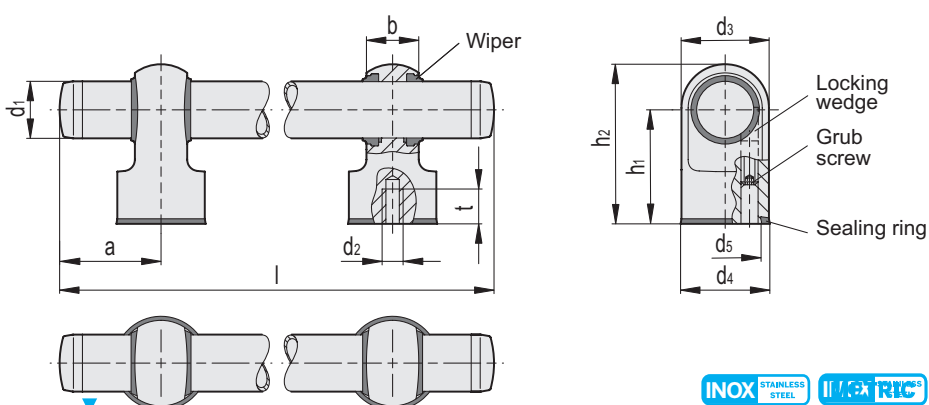
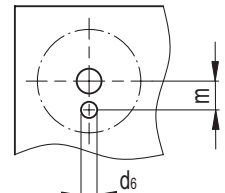
METRIC



Application example



Drilling template



Conversion Table
1 mm = 0.039 inch

d1	
mm	inch
30	1.17
40	1.56

INOX STAINLESS STEEL

Code	Description	d1	l	d2	d3	d4	d5	d6	b	a min	h1	h2	m	tmin	sw	△
GN.31061	GN 3330-NI-30-300-MT-T	30	300	M 10	46	46.6	42	8	27.5	70	60	84	13.5	20	5	1687
GN.31062	GN 3330-NI-30-400-MT-T	30	400	M 10	46	46.6	42	8	27.5	70	60	84	13.5	20	5	1794
GN.31063	GN 3330-NI-30-500-MT-T	30	500	M 10	46	46.6	42	8	27.5	70	60	84	13.5	20	5	1900
GN.31064	GN 3330-NI-30-600-MT-T	30	600	M 10	46	46.6	42	8	27.5	70	60	84	13.5	20	5	2006
GN.31065	GN 3330-NI-40-400-MT-T	40	400	M 12	56	56.8	50	8	30	70	70	99	18.5	25	5	2803
GN.31066	GN 3330-NI-40-600-MT-T	40	600	M 12	56	56.8	50	8	30	70	70	99	18.5	25	5	3090
GN.31067	GN 3330-NI-40-800-MT-T	40	800	M 12	56	56.8	50	8	30	70	70	99	18.5	25	5	3377
GN.31068	GN 3330-NI-40-1000-MT-T	40	1000	M 12	56	56.8	50	8	30	70	70	99	18.5	25	5	3663